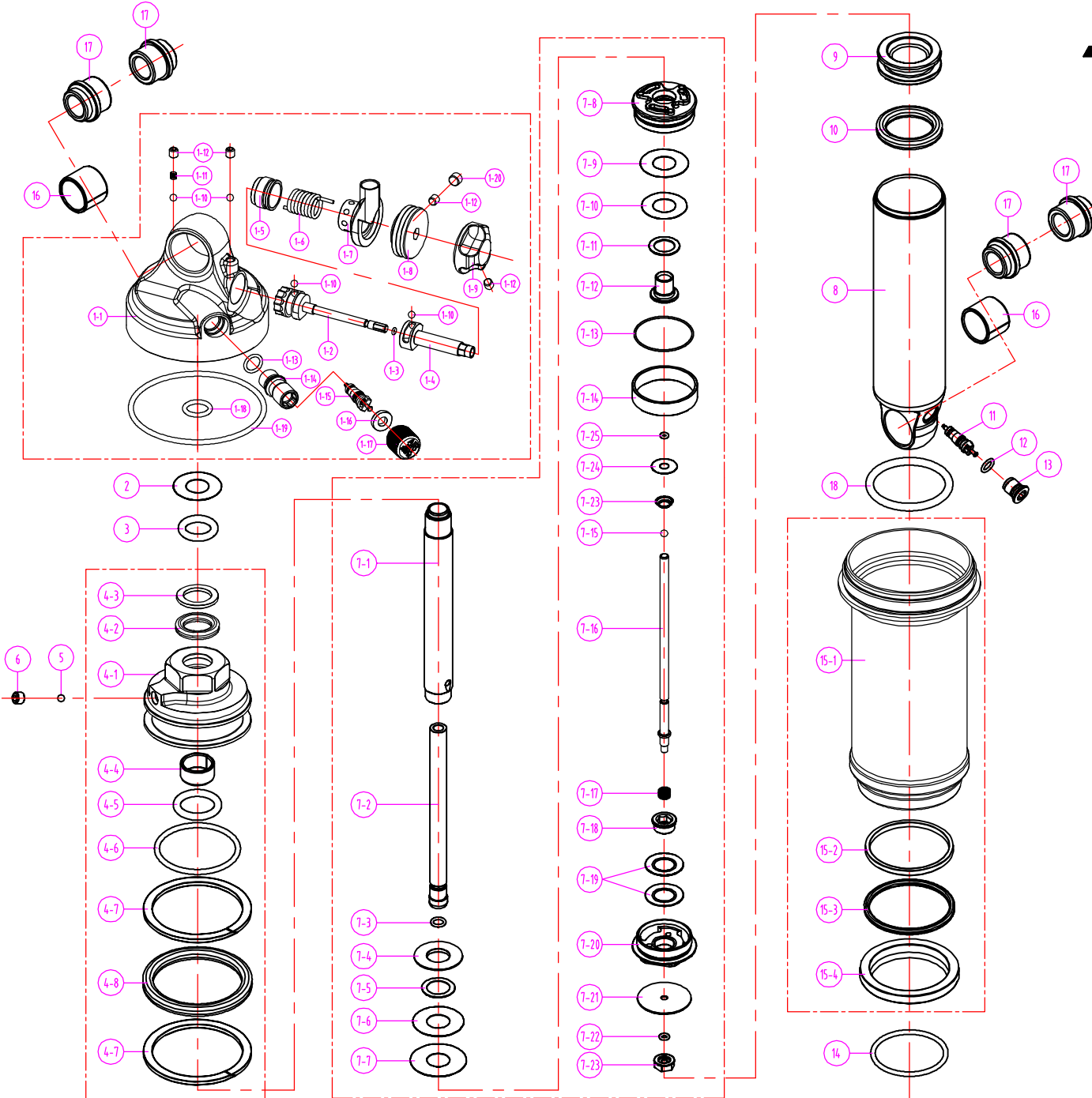


# SR SUNTOUR

## RS19-EDGE RL-R / RL-R8 IMPERIAL

Date	2018.09.05	Version	1
Amended			



18	◎ 避震C	FAA352	NBR	1	1	1	1	1	1	1	1	1	
17	◎ 避震SHING	RAA073	AL6061	2	2	2	2	2	2	2	2	2	
	◎ 避震SHING	RAA072	AL6061	2	2	2	2	2	2	2	2	2	
16	◎ 避震軸承	REE074	STEEL	2	2	2	2	2	2	2	2	2	
15	◎ 避震主彈簧ASSEMBLY	RBA306-60										1	
		RBA306-50										1	
		RBA306-40								1			
		RBA306-30						1	1				
		RBA306-20						1					
14	◎ 避震C	RAA100	NBR	1	1	1	1	1	1	1	1		
13	◎ 避震AP	RAA102	AL6061	1	1	1	1	1	1	1	1		
12	◎ 避震C	FAA140	NBR	1	1	1	1	1	1	1	1		
11	◎ 避震 VALVE	FAA170		1	1	1	1	1	1	1	1		
10	◎ 避震C	RAA046	NBR	1	1	1	1	1	1	1	1		
9	◎ 避震PISTON	REE066	AL6061	1	1	1	1	1	1	1	1	1	
		RLB101-8	AL7050									1	
		RLB101-5	AL7050									1	
		RLB101-4	AL7050							1	1		
		RLB101-2	AL7050						1				
8	◎ 避震 BODY	RLB101-3	AL7050					1					
		RLB101-1	AL7050	1									
		RBA113-70-R8											1
		RBA113-70											1
		RBA113-50-R8											1
7	◎ 避震 PINDLE ASSEMBLY	RBA113-50										1	
		RBA113-40-R8									1		
		RBA113-40										1	
		RBA113-30-R8									1		
		RBA113-30								1	1		
		RBA113-20-R8									1		
		RBA113-20									1		
		RBA113-10-R8										1	
6	◎ 避震彈簧	PSB103	STEEL	1	1	1	1	1	1	1	1		
5	◎ 避震 L 彈簧	DS0001	STEEL	1	1	1	1	1	1	1	1		
4	◎ 避震 SET ASSEMBLY	RBA304		1	1	1	1	1	1	1	1		
3	◎ 避震C	RAA074	NBR	1	1	1	1	1	1	1	1		
2	◎ 避震HER	RSW097	STEEL	1	1	1	1	1	1	1	1		
1	◎ 避震 ASSEMBLY	RBA302-30		1	1	1	1	1	1	1	1		
單位	◎ 避震組件	◎ 避震組件	◎ 避震組件	◎ 避震組件	◎ 避震組件	◎ 避震組件	◎ 避震組件	◎ 避震組件	◎ 避震組件	◎ 避震組件	◎ 避震組件	◎ 避震組件	
				216	200	200	190	184	165	152			
				63	57	51	51	44	38	31			